

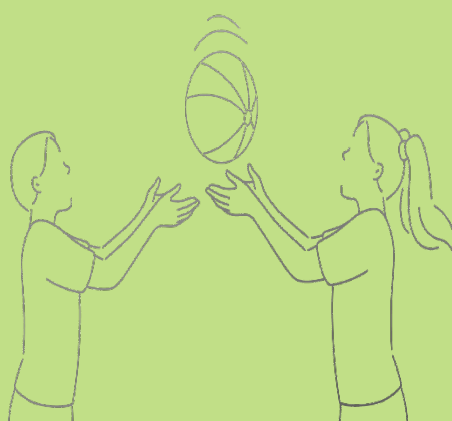
Salford Safeguarding Children Partnership

Annual Report 2023/24 Summary



Contents

Section	Page
Introduction	3
Reflections from Partners	4
Prevention	5-6
Protection	7
Communications & Engagement	8
Voice of the child	9
Safeguarding Effectiveness	10
Learning & Achievements	11
Voice of our Practitioners	12



Introduction

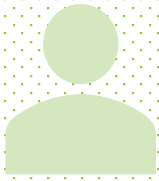
We are delighted to introduce the annual report for the Salford Safeguarding Children Partnership for 2023/24. This report covers the period of 1st April 2023 to 31st March 2024.

The full report provides information about the work and effectiveness of our local safeguarding children arrangements in Salford. The full report can be accessed on the Salford Safeguarding Children Partnership website.

As a partnership, we have so much to be proud of in Salford. This report aims to summarise some of the key achievements during the reporting period and is structured around our local strategic priorities.



Reflections from our Partners

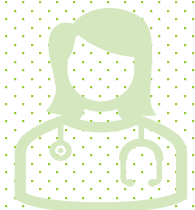


"Safeguarding children requires a whole system, involving all agencies working effectively together. One of the SSCPs greatest strengths, is the high degree of commitment and engagement across the partnership. This is evidenced by an embedded culture of openness and reflective learning, where there is shared ownership of the partnership priorities, with leadership at all levels"
(SSCP Independent Scrutineer).

"The multi-agency partnership is a strong and effective one, identifying and responding to the needs of children and families at both a strategic and operational level". **(Local Authority)**



"Working as a partner with the SSCP improves collaboration, communication, and the joint responsibility for safeguarding".
(Greater Manchester Police)



"Being a partner on the SSCP creates greater opportunities for sharing and dissemination of learning and strengthens capability to support the safeguarding system improvement in Salford". **(NHS GM, Salford Locality)**

We have strengthened the whole system approach to safeguarding babies and taken action to address any gaps and strengthen service provision where necessary.

There is an improved shared understanding across the partnership about the increased vulnerability of babies. ★★

The SSCP has supported practitioners to take proactive action **before** harm occurs through shared training opportunities to upskill the workforce in relation to specific risks that affect babies, including, FASD, Safer Sleep and ICON. **We have observed a reduction in Serious Incidents involving babies during 2023/24.**

We have worked together to develop the local provision for Domestic Abuse and to strengthen multi agency practice in this area. The use of assessment tools for Domestic Abuse are embedded in practice to support multi agency planning. Salford will be adopting the “Safe and Together” model of practice from September 2024.

★ **We have observed a decrease in repeat domestic abuse cases involving children being heard at MARAC by 26%.**

This demonstrates the effectiveness of the multi-agency support offered to families who are considered high risk. There has been an increase in self-referrals to support services this year.

Babies

Prevention

Domestic Abuse

Neglect

Multi agency workshops and Neglect conferences have taken place to improve recognition and response to neglect.

There has been an increase in the use of the Thriving Families Assessment Tool which supports the early identification of neglect.

★★ **There has been a reduction in the proportion of children subject to a Child Protection Plan due to neglect during 2023/24.**



Developed by Salford Youth Council
October 2019



The Salford Adolescent Strategy was developed in consultation with 564 children and young people.

★★ **We have strengthened our transitional safeguarding approaches and improved practitioners understanding and response to supporting key transitions for adolescents.**

★★ Our Education sub group ensures that partners are engaged in the local safeguarding children arrangements. The SSCP works proactively to capitalise on the wealth of experience of education professionals **and uses this asset** to improve our local multi agency safeguarding approach to improving outcomes for children.



Adolescents

Education

Prevention

Exploitation

Child Sexual Abuse



There is a joint all age multi agency approach to tackling exploitation with a new joint exploitation strategy. ★ **Targeted disruption activity has led to improved engagement with children and young people and a reduction in incidents.** Children at risk of exploitation are identified and responded to effectively (OFSTED, 2023).

The SSCP has undertaken a training needs analysis and completed a "Window on Practice" audit to understand the local context.

The SSCP Section 11 practitioner survey highlights practitioners are using the SSCP CSA webpage to access additional training resources.

★ **86% of respondents were confident they can recognise signs of sexual abuse in children and take appropriate action** (up from 78% in 2021).



The use of the **Serious Offence Review pathway** supports reflection across the partnership to learn lessons where young people have committed a serious offence. Partners **work together to identify missed opportunities and take action to improve** future safeguarding approaches. Professionals also reflect on what is working well to capitalise on strengths across the safeguarding system.

The implementation of the **Child Protection medical pathway** has resulted in increased Police involvement within Child Protection medicals, improving information sharing and building relationships between practitioners.

Protection



“Children at risk of exploitation are **identified and responded to effectively**” (OFSTED, 2023).

“Allegations against professionals are managed **swiftly and robustly**”. (OFSTED, 2023).

Partner agencies make **meaningful contributions** to strategy discussions, decision-making and agreed actions reduce the risk of harm to children.

For children who go missing, a thorough multi-agency process ensures that the response to incidents is **timely and purposeful**.

We have implemented a new Referral pathway for when considering **remand** for Salford Children. This allows for Heads of Service to come together to share information so that an **informed decision can be made based upon the child's needs**, complementing our Child Centred Approach to Policing.

Communications & Engagement

The SSCP have a joint comms sub group that co-ordinates comms activity for maximum impact around safeguarding topics.

From 1st April 2023 to 31st March 2024 the SSCP website pages had **59,370 views across 14, 929 users**. The news home page had **920 views over 365 users**.

7-minute briefings was the most visited page on the SSCP website during 2023-24 with **5,083 page views via a total of 2,622 users**.

The Listening Hub is Salford's central structure to support and promote participation and engagement. The Listening Hub aims to develop **shared standards of listening, to build upon good practice, and collectively make improvements to our response and services in Salford**. We feed back to young people in a "you said, we did" format to promote their trust and confidence in the work of the partnership.

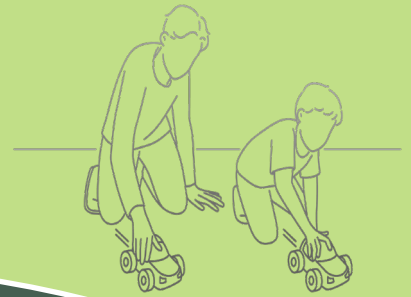


A **Safeguarding Children Youth Summit** will be held in September 2024 with Salford Youth Council to provide scrutiny of the work of the SSCP and to influence future priorities.

20 events & projects were delivered during Youth Day 2023

Our **Parents 4 Positive Change (P4PC)** group delivered training for Social Workers on building trust and working in partnership with parents. The **feedback was excellent** from both the parents and the social workers. One social worker shared that it was **"the best training she had been on"** because she loved hearing directly from parents. Members of P4PC were invited to share their experience of co-producing this training at the SSCP Partnership meeting in March 2024.

Voice of the Child



Children are at the heart of decision-making in Salford. The Mind of My Own (MOMO) app enables young people to have their voices heard. Since the beginning of 2023, we have seen a **steady increase in statements** submitted through the MOMO app month by month. MOMO is now more embedded in practice across Salford. The record use was in October 2023 with a total of 187 statements.

The Make Your Mark Ballot had around **1550 votes** and young people priorities were Health & wellbeing / Crime & safety. **90% of young people** have identified feeling positive when asked "How do you feel about where you live?".

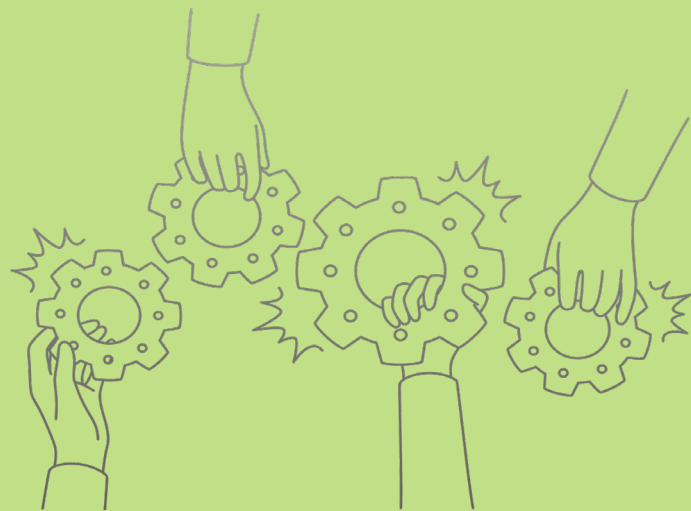
The adolescent strategy was developed **in consultation with 564 children and young people**.

The SSCP have established two positive relationships representatives through the Youth Council. In September 2024, we will hold a Youth Summit to consult with Children and Young people about our local priorities and seek their feedback on how well the SSCP are addressing the issues that matter to them most.

Safeguarding Effectiveness

In Salford, we recognise and accept that safeguarding is never perfect and constant scrutiny is required to ensure that there is continuous improvement evidenced across the system. We scrutinise a range of evidence to seek reassurance that all parts of the system are working effectively to keep children safe.

Our Evidence Base



Impact

“Multi-agency working with children is highly effective and leads to improvements in children’s lives” (OFSTED ILACS Inspection of Children’s Services, November 2023).

Performance management and monitoring processes are robust, ensuring that the Local Authority and the partnership are aware of current practice and emerging issues for children. An openness to learn across the partnership means that areas for development are usually quickly identified.

Effective safeguarding arrangements with cohesive leadership allows professionals to collaborate and coordinate efforts to safeguard children across the whole system, so that children in Salford thrive, and achieve positive outcomes.

Review and promotion of the Escalation process resulted in an **increase in professional escalations** to the SSCP to resolve issues in a timely way for children.

Practice guidance and resources developed to promote Professional Curiosity, Cultural Consciousness, THINK Family and **the importance of working in partnership with families** in response to recurrent themes from practice reviews.

Audits undertaken by the Independent Scrutineer evidenced **improvements in SMART Planning, excellent examples of direct work and capturing the voice of the child and consistent approaches to working with families.**

Multi agency Quality Assurance Panels took place focusing on Homelessness and Working with Males/ Father Figures.

Task and finish groups are established where necessary based upon a local needs analysis.

We have established a multi-agency group to co-ordinate the local response to the recently published statutory Working Together to Safeguarding Children (2023) guidance.

Multi Agency Audits

Learning from Case Reviews

Safeguarding Projects

Learning and Achievements

Training & Workforce Development

Local Priorities

Partnership Development

7 Minute briefings developed following case reviews with 5,083 page views via a total of 2,622 users.

Practice guidance is developed, updated, and strengthened because of learning from reviews.

Quarterly Bitesize Briefings developed to share key messages with 297 attendees from across the partnership.

We have established our Performance and Quality Assurance Sub Group to strengthen scrutiny of safeguarding activity.

We have a well-established culture of high support and high challenge across the SSCP.

We are working to strengthen the role of Education and the VCSE sector in our local partnership arrangements

Multi Agency sub groups meet regularly to progress local priorities:

- Exploitation
- Neglect
- Babies
- Adolescents
- Neglect
- Child Sexual Abuse

Voice of our Practitioners

The findings from our Section 11 Practitioner Survey demonstrate an improvement in professional confidence around the SSCP thematic areas. 243 professionals from across the partnership provided feedback:



100% of practitioners are confident to share information with other professionals if they have a safeguarding concern about a child (up from 99% in 2021).



98% know where to find their own organisation's safeguarding policies (up from 97% in 2021).



98% feel confident to raise safeguarding concerns and are supported in their safeguarding role (up from 95% in 2021).



97% would know exactly what to do about a safeguarding allegation against a colleague (up from 92% in 2021)



97% of practitioners are confident in recognising signs of Neglect and taking appropriate action (up from 90% in 2021).



91% are confident that they can recognise signs of criminal exploitation in children / young people and take appropriate action (up from 81% in 2021)



86% are confident they can recognise signs of sexual abuse in children and take appropriate action (up from 78% in 2021)



68% are familiar with the Professional Challenge and Escalation Policy and confident to use it (up from 59% in 2021)

Salford Safeguarding Children Partnership
Floor 2
Unity House
Civic Centre
Swinton
M27 5DA
Email: sscp@salford.gov.uk
Tel@ 01616034322
@salfordscp
#safeinsalford
#makingadifference

