

Prevention Action and Support Team - Salford

Treena Raffles – Domestic Abuse Service Manage, TLC

Background

TLC's High Risk High Harm work



- TLC successfully delivered the Drive project in Salford, Rochdale, Bury and South Manchester between 2021 - 2023, a national intervention targeting high risk, high harm perpetrators of Domestic Abuse.
- Drive utilized 1:1 intensive case management and Police led perpetrator panels to create robust and creative multi-agency risk management plans
- TLC has taken learning from Drive and other approaches to develop a bespoke and cost-effective high risk high harm intensive case management model which has been commissioned across multiple GM boroughs including Salford, Bury, Tameside and City of Manchester

TLC Salford DA Services



RESPECT YOUNG PEOPLES PROGRAMME

An intervention support programme for families, where children or young people are displaying harmful and abusive behaviours towards parents and/or carers. Encouraging everyone to take a role in preventing abuse and support everyone to learn respectful ways of dealing with conflict, difficulty and intimacy.

ENCOURAGING HEALTHY RELATIONSHIPS

For young people who are displaying harmful behaviours in their intimate relationships and/or are showing harmful attitudes or beliefs towards a specific set of people that could affect their ability to engage in healthy relationships.

BRIDGING TO CHANGE

'Medium risk' behaviour change programme for men in heterosexual relationships.

WOMEN WHO USE HARM

Behaviour change programme for women who are using harm in their relationships.

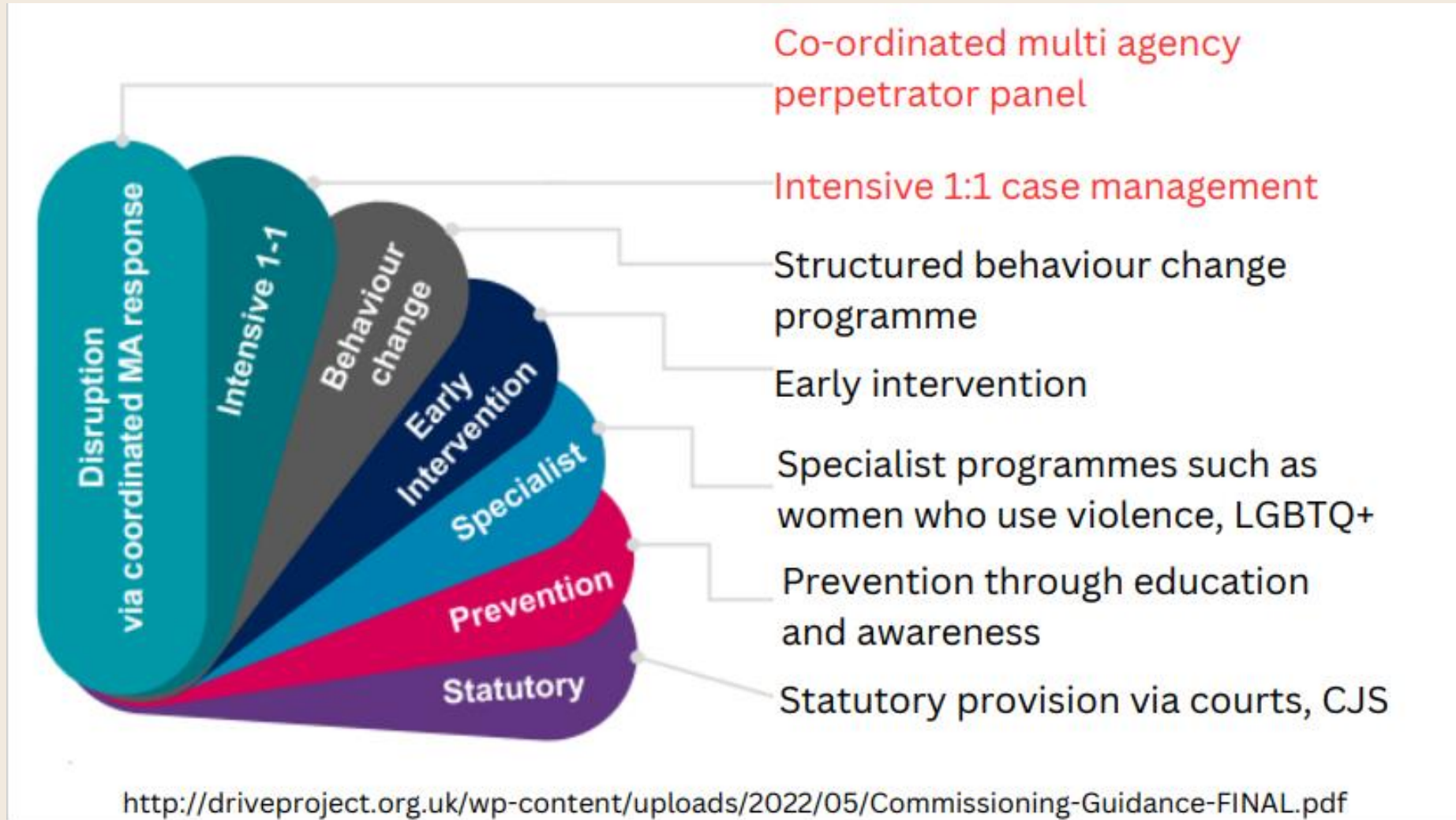
LGBTQIA+ BEHAVIOUR CHANGE

Behaviour change work for people who identify as LGBTQ+ and using harm in their relationships - this includes sexuality and/or gender and is tailored to the client's needs.

LANGUAGES OTHER THAN ENGLISH (LOTE)

Behaviour change programme for people who speak English as an additional language and need an interpreter to support.

Comprehensive Perpetrator Provision



Gaps in Provision



HRHH Intensive Case Management

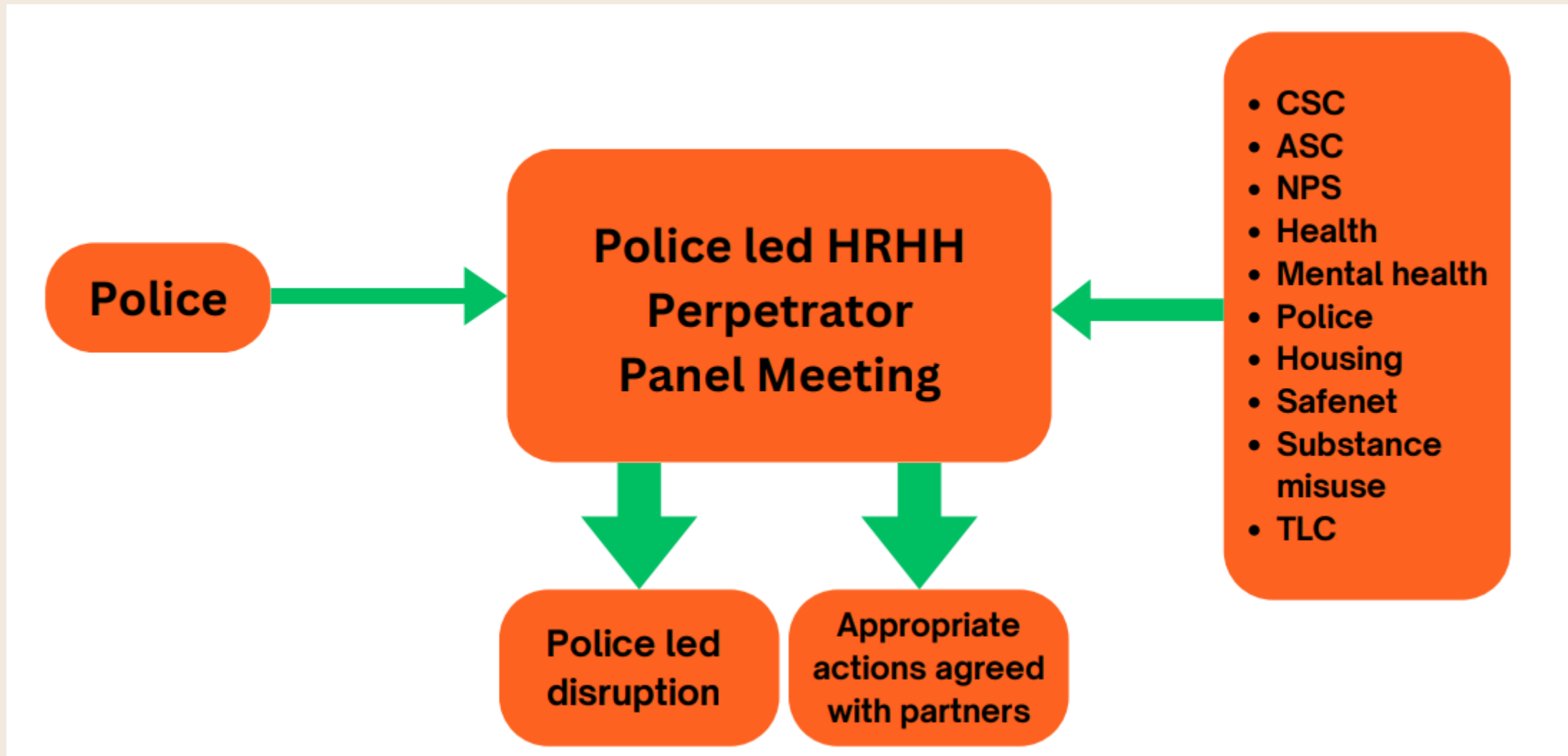
- Interventions include 1:1 support, addressing denial, minimization, motivation for change as well as close liaison with multi agency partners engaged with the perpetrator and their family
-

Multi – agency Perpetrator Panel

- Delivering a collaborative intervention across agency partners to engage and disrupt, with a focus on high-risk high harm perpetrators.
 - Identifying high risk perpetrators via algorithm tools / MARAC
 - Police led interventions to disrupt behaviour when there is no active engagement from perpetrators
-

Salford Complex DA Panel

Salford Complex DA Case Panel



Identifying the Cohort

Criteria:

An individual who is responsible for, or suspected of being responsible for, committing acts which are defined as domestic abuse by definition, and are identified through data to be the highest repeats and / or highest risk in the borough.

Identification:

MARAC

- Cases selected via Multi Agency Risk Assessment Conference

Demand Data

- Police identify repeat demand generators using DAB data

Multi-agency Panel Meeting

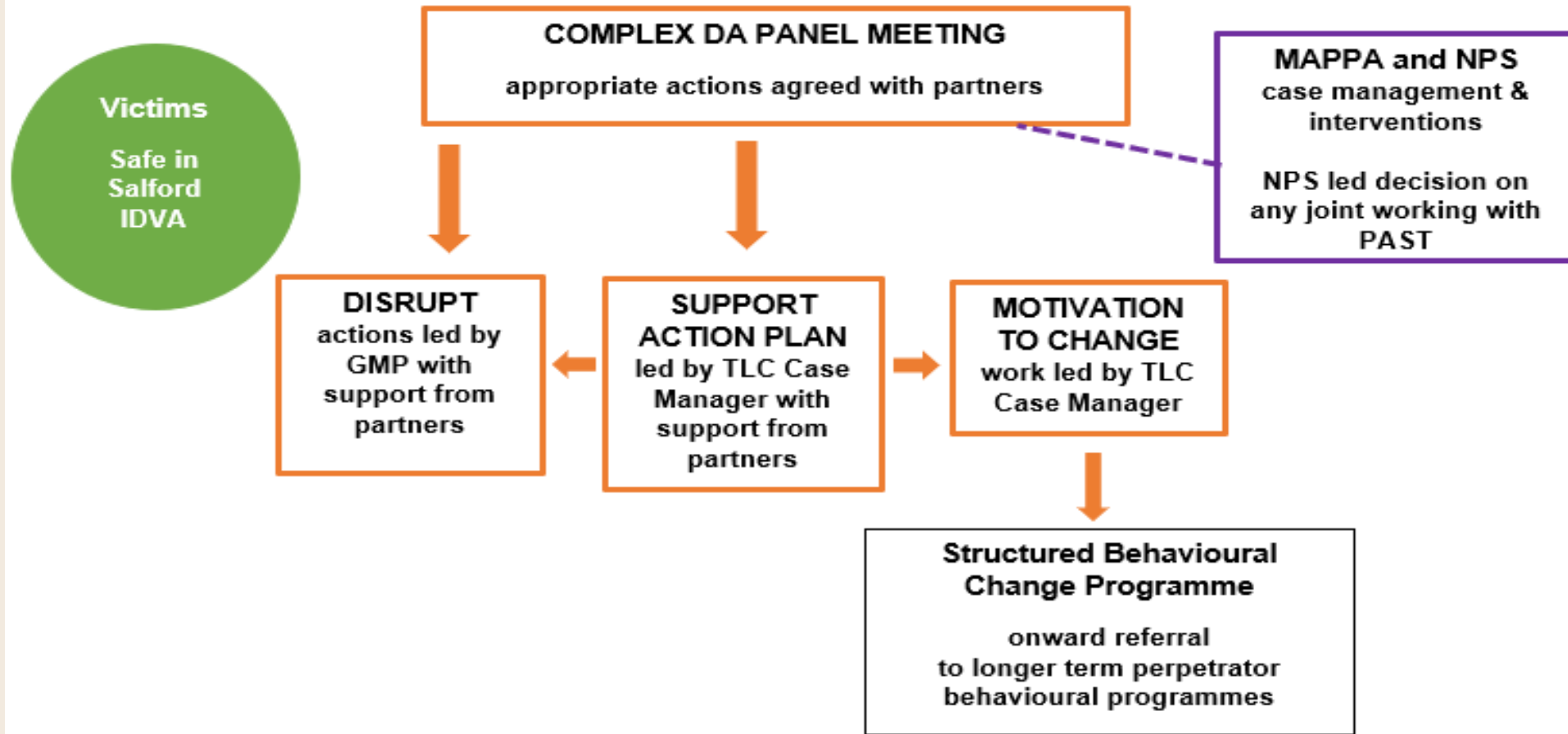
The objectives of the meeting are to ensure effective multi agency discussion and agreements in response to the identification of nominal by:

- Exchanging relevant information and clarifying the facts of the (alleged) abuse
- Reaching an agreed assessment of the risk to the victim(s) and any other people
- Agreeing actions and timings
- Identifying the professionals that will undertake those actions
- Planning to provide any emergency protection needed
- Identifying whether any further safeguarding referrals are required and agreeing the professional to undertake those actions
- Monthly on-line meetings, chaired by GMP
- Single Point of Contact (SPOC) for key agencies

TLC Prevention Action & Support Team (P.A.S.T)

Prevention, Action & Support Team (P.A.S.T.)

Perpetrator Action and Support Team (PAST) model



Prevention, Action & Support

Prevention

Focused 1:1 sessions aiming to increase accountability and motivation to change



Action

Supporting disrupt actions and multi-agency risk mitigation plans



Support

Addressing the unique needs of the individual to remove barriers to change

PAST Intensive Case Management

- 1:1 intensive case management addressing perpetrator risk and needs
- Developing insight and accountability, challenging unhealthy values and beliefs, and offering intensive support.
- Can engage in work with perpetrators despite ongoing criminal proceedings, provided certain requirements are met.
- Strong onus on multi-agency working PAST case managers work closely with other services to ensure information is shared and joint case working is achieved where needed.
- Disruption and enforcement tactics can be utilised for non-compliant individuals, led by statutory agencies and supported by PAST case manager.
- Victim voice at the forefront of all work completed, via collaborative working and information sharing with Safe in Salford victim services

Questions?

Any Final Questions?


Gary Valentine – Salford PAST Case Manager, TLC
garyvalentine@talklistenchange.org.uk


Howard Howard – Salford PAST Case Manager, TLC
howardhoward@talklistenchange.org.uk


Treena Raffles – Salford Domestic Abuse Service
Manager, TLC
treenaraffles@talklistenchange.org.uk



enquiries@talklistenchange.org.uk

 Instagram: [@TLCCharity](https://www.instagram.com/TLCCharity)

 Facebook: [talklistenchange](https://www.facebook.com/talklistenchange)

 Twitter: [@TLC_Charity](https://twitter.com/TLC_Charity)

 LinkedIn: [tlc-charity](https://www.linkedin.com/company/tlc-charity)