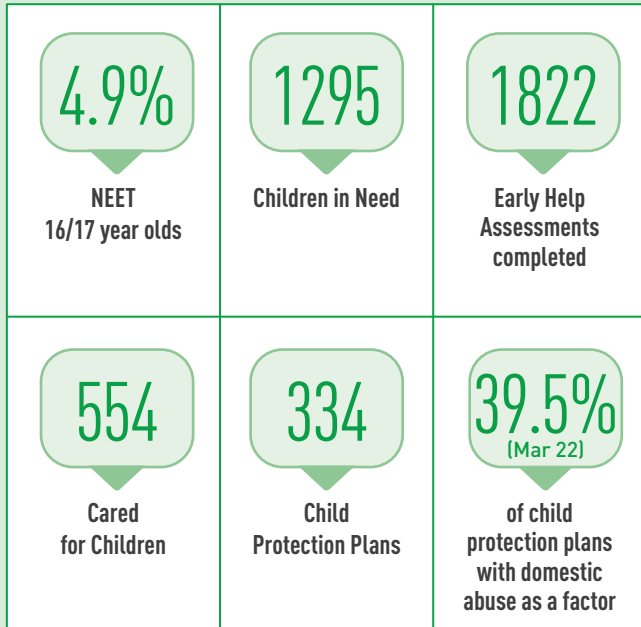


SSCP Annual Report - Summary

Key needs data



Year average for child protection plans for each of the four categories:

44.27%
Emotional

50.77%
Neglect

3.72%
Physical

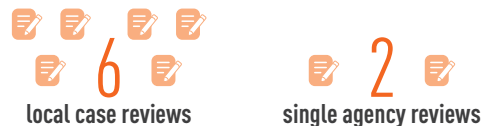
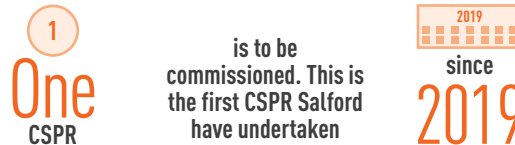
1.24%
Sexual

Case review activity

During 2021-22 there were



From the



SSCP key priorities 2021-2022

Assurance Areas → Trauma Informed Practice • Children affected by domestic abuse • Transition from Clinical Commissioning Groups to Integrated Care System

Strategic Priorities → Neglect • Contextual Safeguarding and Children missing • Child Sexual Abuse



Two listening hub consultation events were held. The themes were:

- On-line safety
- Emotional Health and Well-Being

SSCP Safeguarding Children Practitioner Survey 2021: What's working well?

