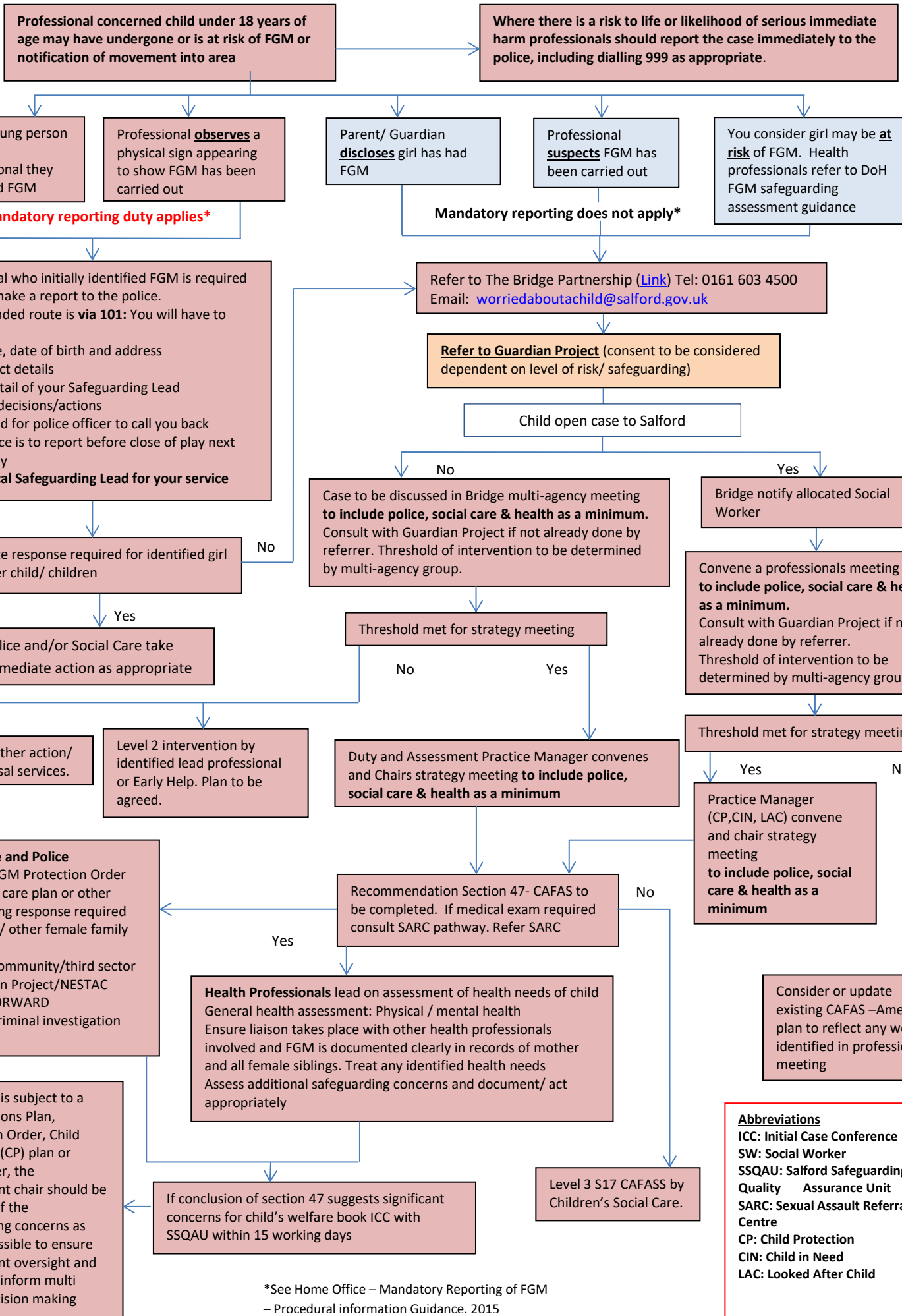


Female Genital Mutilation Salford Pathway (0-18yrs)



*See Home Office – Mandatory Reporting of FGM – Procedural information Guidance. 2015

Abbreviations
 ICC: Initial Case Conference
 SW: Social Worker
 SSQAU: Salford Safeguarding Quality Assurance Unit
 SARC: Sexual Assault Referral Centre
 CP: Child Protection
 CIN: Child in Need
 LAC: Looked After Child