

NEW SAFEGUARDING CHILDREN PARTNERSHIP ARRANGEMENTS ROADSHOWS May 2019



[@salfordscp](https://twitter.com/salfordscp)

[#safeinsalford](https://twitter.com/hashtag/safeinsalford)

[#makingadifference](https://twitter.com/hashtag/makingadifference)



Salford Safeguarding Children Partnership

- Working Together To Safeguard Children 2018 – new statutory requirements and changes to Safeguarding Children Boards.
- Three statutory partners have equal and joint responsibility for local safeguarding arrangements BUT relevant agencies must continue to work together.
- Purpose of the local arrangements is to support and enable local organisations and agencies to work together in a system where:
 - **children are safeguarded and their welfare promoted**
 - collaborate and co-own the vision for how to **achieve improved outcomes** for vulnerable children
 - challenge appropriately and **hold one another to account** effectively
 - there is **early identification and analysis** of new safeguarding issues and emerging threats
 - **learning is promoted and embedded** in a way that local services for children and families can become more reflective and implement changes to practice
 - **information is shared effectively** to facilitate more accurate and timely decision making for children and families.

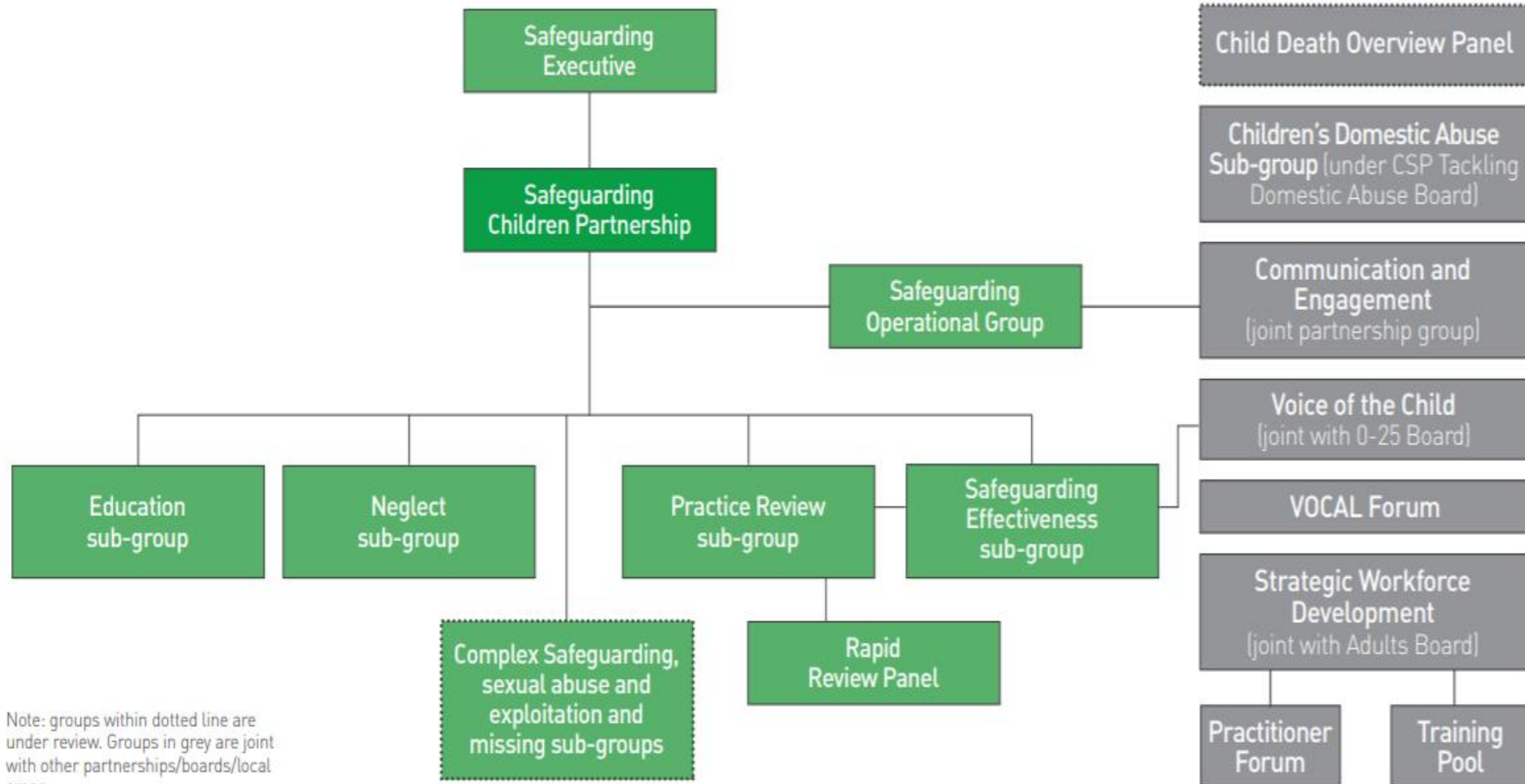
Vision, Values, Principles and Objectives

One vision	Two key values	Six principles
All partners are committed to working together so that every child in Salford is safe, well and able to reach their full potential.	<ol style="list-style-type: none"> 1. A child centred approach: for services to be effective they should be based on a clear understanding of the needs and views of children. 2. Safeguarding is everyone's responsibility: for services to be effective each citizen, practitioner and organisation should play their part. 	<ol style="list-style-type: none"> 1. Empowerment: People being supported and encouraged to make their own decisions and with informed consent. 2. Prevention: It is better to take action before harm occurs. 3. Proportionality: The least intrusive response appropriate to the risk presented. 4. Protection: Support and representation for those in greatest need. 5. Partnership: Local solutions through services working with their communities. Communities have a part to play in preventing, detecting and reporting safeguarding issues. 6. Accountability: Accountability and transparency in safeguarding practice.

Objectives

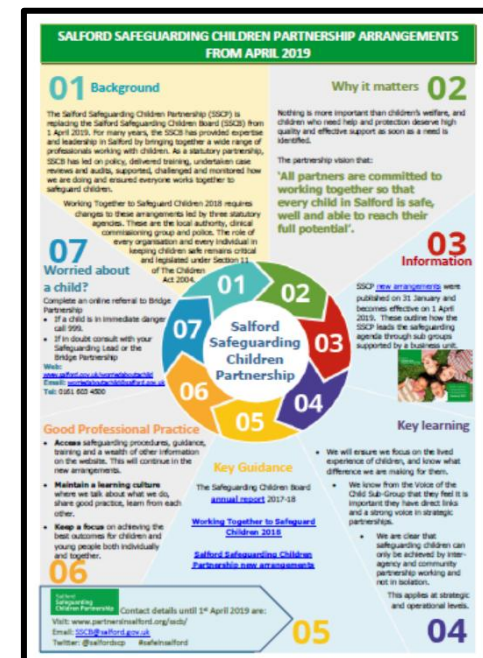
- We **evaluate** practice and its impact to ensure professionals and organisations within Salford keep all children safe.
- We are **assured** that safeguarding is as effective as possible, using a range of mechanisms to co-ordinate, monitor, challenge and improve both our services, and outcomes for children and young people.
- We **learn** from every opportunity and ensure we have a skilled workforce who have access to up to date, relevant information to help them to keep children safe and happy.

SSCP Structure



Work so far and what this means you

- Salford is one of 17 DfE Early Adopter sites (receive funding, develop quicker, specialist support, share learning with others).
- New arrangements started 1st April 2019: you'll note changes to the name, website, better communications and engagement. 7 Minute briefing and roadshows.
- Better focus on the lived experiences of the child and impact we make on their lives across Salford.
- New way of reviewing cases and identifying areas we can do better.
- You tell us what is important for you.



OUR STRATEGIC PRIORITIES 2019/20

Priority 1: Neglect

Why is this a priority for us?: We have not made sufficient progress in 2018/19 on this priority, and Ofsted inspection of the local authority children's services in September 2018 told us that an area to improve is "the timeliness of response to children who are living in neglectful circumstances"

Priority 2: Complex Safeguarding:

- Gun and Knife Crime
- Child Sexual Abuse and Exploitation
- Contextual Safeguarding

Why is this a priority for us? We know there are strong links between CSE and children who go missing, and other forms of exploitation and abuse. We know that this is a worry for our children and young people: Over 6,000 young people in Salford told us that gun and knife crime was one of their top three worries.

Priority 3: Communication and Engagement

Why is this a priority for us? We want to ensure that we are communicating well with professionals and communities to raise awareness, provide advice, increase knowledge and confidence.

Assurance Area 1:

Early Help

The 0-25 advisory Board leads on early help, but there are elements relating to safeguarding and well-being which means that the SSCP need to be assured that early help is effective

Assurance Area 2:

Children Affected by Domestic Abuse

Work to address domestic abuse in Salford is led by the Community Safety Partnership (CSP) and there are obvious overlaps in relation to safeguarding children as a high proportion of children living in households where domestic abuse occurs.

Assurance Area 3:

The Safeguarding Elements of Emotional Health and Wellbeing

The Emotional Health and Wellbeing Partnership has continued to act as the 'expert reference group' under the 0-25 Board and they will provide the assurance to the Safeguarding Partnership. Child Protection Plans for emotional abuse; self-harm A&E admissions and mental ill-health are key elements of safeguarding children.

Priority 1: Neglect

“Neglect is the persistent failure to meet a child’s basic physical and/or psychological needs, likely to result in the serious impairment of the child’s health or development”

(DfE Working Together to Safeguard Children 2018)

Types of Neglect

- Medical neglect
- Nutritional neglect
- Emotional neglect
- Educational neglect
- Physical neglect
- Lack of supervision and guidance

(Horwath 2007)

Priority 1: Neglect (cont.)

Prevalence in Salford

- **Referrals to the Bridge:** An average of 142 referrals per month to the Bridge where 'Neglect' is a concern but number likely to be higher, recorded as 'parental issues'. In 46% of cases, advice/information given by the Bridge, 14% meet threshold for social care
- **Social Care Assessments:** Higher than NW and England average. Of children subject of social care assessment for Neglect, 36% aged 10-15, 66% are male, 63% White British, Highest numbers in Broughton and Barton wards
- **Child Protection Plans:** Higher than NW but in line with England: 197 children at 1 March 2019 (44%). Fairly even split between ages 1-4, 5 to 9 and 10-15.

But:

- Are we keeping the child and their lived experienced and impact that has in clear focus?
- What difference are we making?

YOUR PART IN THE PARTNERSHIP - WHAT CAN YOU DO?



Access safeguarding procedures, guidance, training and a wealth of other information on the SSCP website. This level of support for families and professionals will continue in the new arrangements.



Maintain a **learning culture** in Salford where we talk about what we do, share good practice, learn from each other and externally about what doesn't work as well as what works. Information is shared appropriately, and transparently.



Keep a focus on **achieving the best outcomes** for children and young people both individually and together. By understanding their lived experiences and seeing life through their eyes, every action can have a positive impact.



Your ideas and feedback:

- *WHATS WORKING WELL?*
- *WHAT ARE YOU WORRIED ABOUT?*
- *WHAT CAN YOU, OR OTHERS DO DIFFERENTLY TO KEEP CHILDREN SAFE?*



Contacts and Further Information

SSCP:

Visit: www.partnersinsalford.org/sscb

Email: SSCP@salford.gov.uk

Twitter: @salfordscp #safeinsalford

If you have concerns about a child:

Early Help forms and [secure upload](#)

Complete an [online referral](#) to Bridge Partnership

If in doubt consult with your Safeguarding Lead or the Bridge Partnership

Web: www.salford.gov.uk/worriedaboutachild

Email: worriedaboutachild@salford.gov.uk

Tel: 0161 603 4500

If a child is in immediate danger call 999.

