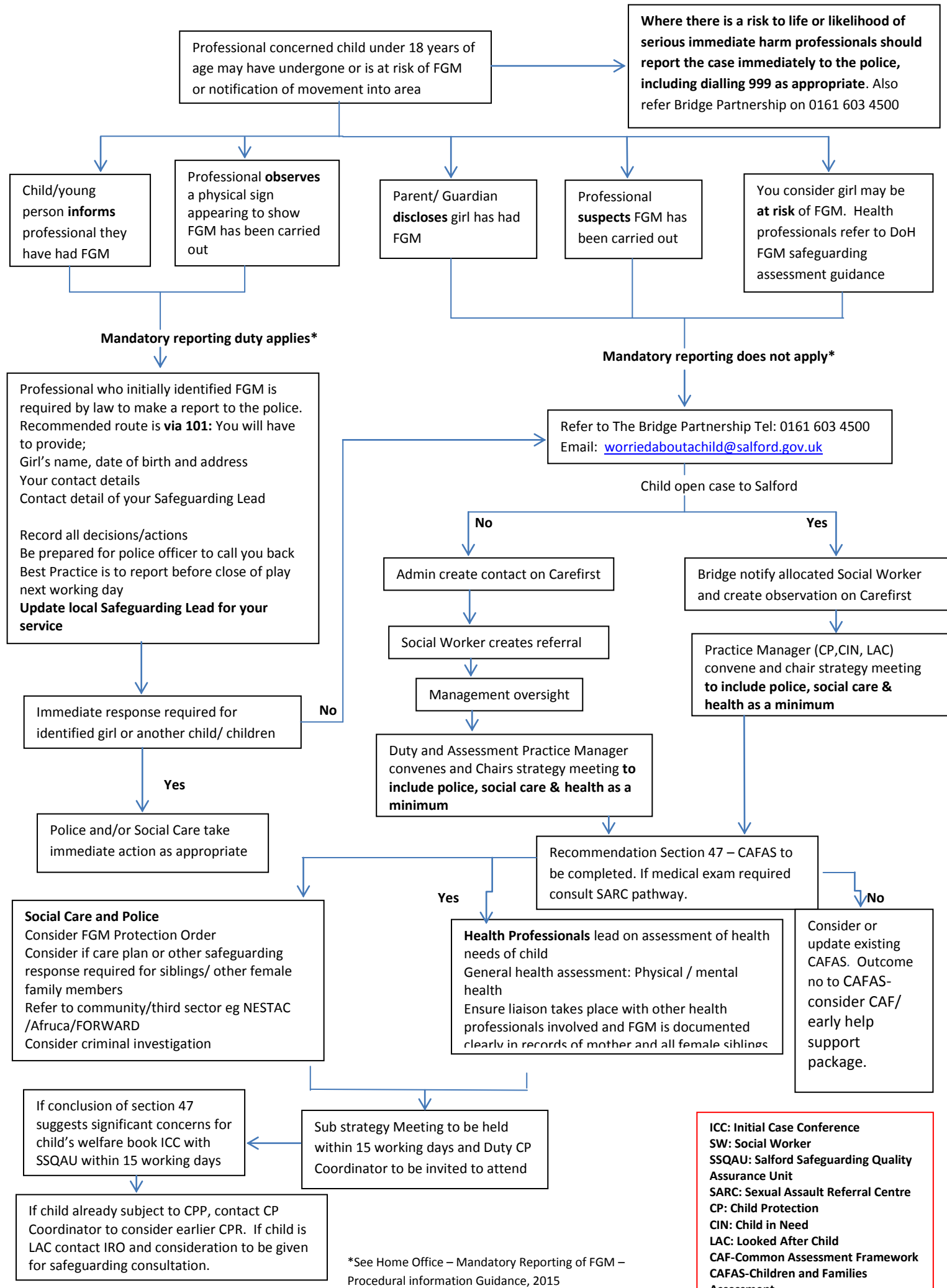


Female Genital Mutilation Salford Local Pathway



*See Home Office – Mandatory Reporting of FGM – Procedural information Guidance, 2015

ICC: Initial Case Conference
SW: Social Worker
SSQAU: Salford Safeguarding Quality Assurance Unit
SARC: Sexual Assault Referral Centre
CP: Child Protection
CIN: Child in Need
LAC: Looked After Child
CAF-Common Assessment Framework
CAFAS-Children and Families Assessment.